



DISTRICT FACTSHEET

OXFORD CITY



Picture: Boundary Brook Nature Reserve

OPPORTUNITIES IN OXFORD CITY

Fostering a localised district 'sub-'network for greater collaboration

Increased collaboration on environmental intersection with social justice issues eg. fuel poverty, community cohesion and community wealth building, mental health and social isolation

Expansion of the local circular economy

Expansion of the environmental intersection with the arts; using the arts as a tool for public engagement

Increased collaboration with Oxford City Council to maximise resources available to support local groups

Bridging or 'twinning' between urban and rural projects

Greater public engagement and awareness

WHO IS COMMUNITY ACTION GROUPS OXFORDSHIRE?

CAG Oxfordshire is a network of 120 community action groups working across Oxfordshire to make it a safer, fairer, greener, more sustainable place to live, work and visit. We support our members to set up and run activities that take action on issues impacting the environment, our communities, and our everyday lives. The CAG network delivers a number of projects and initiatives



AREAS OF IMPACT

Tree Planting and Mapping
Biodiversity and Rewilding
Liveable Streets and Active Travel
Material Waste Reduction and the transition to a circular and sharing economy
Food Sustainability and the Local Food Economy
Tackling Food Waste and Food Insecurity
Sustainable Energy
Community-Centered Housing and Spaces
Social Justice and supporting equitable health and wellbeing outcomes
Connecting people to nature



SUPPORT CAG OFFERS

1:1 Member Support
Training and Workshops
Insurance Advice and Grants
Special Project Grants
Peer to Peer Support and Collaboration
Network and Partnership Development
Newsletters and Marketing Support

OUR YEAR AT A GLANCE



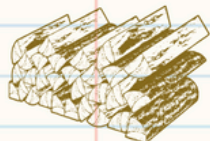
201,248

Volunteering hours were recorded, more than double those for 22-23 demonstrating the continued dedication of network volunteers to contribute their time and energy to community action within Oxfordshire.



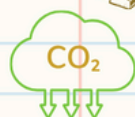
Events and activities were held across the county, reaching over 120,000 participants

These activities resulted in....



1,654 TONNES

of non-food waste being diverted



1,695 TONNES

of carbon dioxide emissions prevented

£5,938,350

The total financial output, including the value of volunteer time, grants and income from across the network

8,847



678 TONNES

of food diverted from waste and redistributed, cooked, eaten or processed



1,194

Bikes were repaired by groups such as Cycloxx, Broken Spoke, and Rose Hill & Iffley Low Carbon saving £396,408



This data was collected from 65 groups in our network of 111 groups from April 2023 to March 2024

CURRENT OXFORD CITY CAG MEMBERS:

There are 47 active CAG members based in Oxford City and those who operate countywide, representing over 40% of the whole network.

Abundance Oxford

A not-for-profit community harvesting, redistributing & preserving group.

Barracks Lane Community Garden

a green space at the heart of a vibrant community in OX4 run by members of the local community.

Beautiful Barton

Set up by Barton Residents for Barton Residents and others to celebrate the beauty of Barton.

Broken Spoke Bike Co-op

started by people who are passionate about cycling offering workshop support, mechanics courses, cycle training, and an information hub

Bullington Community Association

The Bullington Community Association (BCA) is the home of Bullington Community Centre, where the health and well-being of the community is everyone's priority.

Climate Collective Oxford

The aim is to establish a Climate Emergency Centre in central Oxford where the general public will be welcomed to learn more about the climate and nature emergency and what they can do.

Cotteslowe Greenhouse

A community-led social enterprise which will help us connect with nature and each other. We're working to secure a long-term lease on the greenhouses in Cotteslowe Park.

Cyclox

Cyclox campaigns to put cycling at the heart of Oxford's future. Their mission is to get more people cycling, more often, and more safely.

East Oxford Farmers Market

The East Oxford Farmers' & Community Market is a small, friendly local market that has been operating since 2006.

End Sewage Pollution mid-Thames

Founded in July 2020, we are a community-lead group campaigning against sewage pollution of our rivers.

Flo's: The Place in the Park

Flo's the Place in the Park is a community hub in Florence Park. They aim to build better opportunities for the community to work, eat, play, learn and connect with each other, reducing inequalities and supporting the environment.

Hinksey Trail Regeneration

The Hinksey Heights Nature Trail is a privately-owned permissive path connecting Chilswell Valley and Harcourt Hill.

Hogacre Eco Common Park

Hogacre Common is a fourteen acre site less than a mile from the centre of Oxford. It hosts low carbon community activities and events.

Iraqi Women Art and War

A project set up to capture women oral history stories before, during and after war 2003 in an artistic way. To support women to integrate into British culture and to exchange, build bridges among communities

Local Environment Action Flo Park (LEAF)

LEAF work on projects including thermal imaging and energy saving advice; campaigning against air pollution and bee-friendly wildflower planting projects.

Low Carbon East Oxford

Low Carbon East Oxford is a grassroots community group made up of residents of east Oxford who have come together with the collective aim of reducing the carbon emissions of our local area to help tackle the climate crisis.

Low Carbon Oxford North

Low Carbon Oxford North (LCON) is a charity set up by local residents to support ambitious CO2 cuts through local action. They work with the community, offering practical ideas, information and activities, to help address the climate crisis.

Low Carbon South Oxford

LCSO is a community group established in 2011 which aims to help South Oxford residents, groups and organisations work together to reduce their carbon footprint; raise awareness of environmental issues; and move towards more environmentally sustainable ways of living and working.

Low Carbon West Oxford

Set up after the summer floods of 2007 by residents concerned about climate change and encouraging residents to live more sustainably, and contributing to a more cohesive and resilient community.

Makespace Oxford

Transform empty and underused buildings into affordable, community-driven spaces

Marston Community Gardening

Established in June 2018 with a view to supporting and fostering local engagement in gardening, planting, and related activities .

Orinoco (Oxford and Banbury)

Our mission is to banish boredom and save the planet using creativity and play to inspire the reuse of materials. Orinoco has saved lorry loads of interesting resources from ending up in landfill.

Oxford African and Caribbean Multicultural Association (OACMA)

We are a vibrant community hub dedicated to supporting and empowering African and Caribbean individuals and families across Oxfordshire.

Oxford City Farm

has a vision of empowered communities learning and working together to produce food locally and live healthy, enriched and sustainable lives

Oxford Clothes Hub

A preloved affordable clothing initiative in oxford

Oxford Co-Housing

Oxford CoHousing is a group of people who wish to build and live in an intentional community. They hope to build a community of mixed dwellings and tenures, of between 20-40 units.

Oxford Community Action

We help minority communities gain representation in civic society.

We work together on a grassroots level with community leaders.

We address systemic and structural inequalities.

Oxford Conservation Volunteers

Oxford Conservation Volunteers is a voluntary organisation that carries out practical work conserving the wildlife and traditional landscape of the Oxford area.

Oxford Food Surplus Cafe

A pop-up friendly café where all are welcome to come and eat and co-create community through FOOD :)

Oxford Greenprint

A workers' co-op providing eco-friendly print services to Oxford and beyond.

Oxford Poetry Library

Oxford Poetry Library is a pedal-powered mobile poetry library which aims to be a free and open resource of poetry for readers of all backgrounds, tastes, and ages.

Oxford Urban Wildlife Group

Oxford Urban Wildlife Group (OUWG) manages Boundary Brook Nature Reserve, a secluded haven for Oxford wildlife, located just steps away from Florence Park.

Oxfordshire Community Land Trust Ltd

We make land work for people and planet, not profit, increasing the availability of high-quality, sustainable, and permanently affordable housing

Oxgrow

Oxgrow is a transformed waste land in the heart of Oxford that has been turned into a thriving food garden. It is open to everyone.

Parasol Project

The Parasol Project is an Oxford based play charity established in 1991. We are committed to redressing the balance for disabled and disadvantaged children and young people experiencing, or at risk of, social exclusion.

Refill Oxford

Refill works by connecting people with locations where they can eat, drink and shop with less waste.

Rose Hill and Iffley Low Carbon

RHLC aims to make Rose Hill the first zero carbon estate in the country. They work on zero carbon projects, repair cafes and food sustainability.

SESI Refill

We are a social enterprise based in Oxfordshire which supplies sustainable detergents to shops, farmers markets, cooperatives and charity organisations.

SHARE Oxford

SHARE Oxford is a key part of the circular economy in Oxford. They run a Library of Things and Repair Cafes.

South Oxford Farmers and Community Market

The market is an initiative of Low Carbon South Oxford, offering local and ethically sourced goods.

Syrian Community Oxfordshire

Our objective is to improve the quality of life for people in the community by providing high-quality, effective mental health and well-being activities.

Tandem Collective

Tandem Collective's mission is to influence positive change towards social justice and environmental sustainability through arts and creativity.

The Children's Allotment

The Children's Allotment is a cooperative that transformed a previously disused plant nursery into a beautiful educational space for families to be outside and connect with nature.

The Nature Effect

The Nature Effect is a catalyst for personal, professional and community transformation that draws inspiration from the natural world.

Transition by Design

A design collective at the junction of architecture, strategic design and social change.

Transition Lighthouse Empowerment Space

Therapeutic healing and recovery for lived traumatic experiences for African diaspora communities on FGM, Domestic abuse, Covid 19 and Black Lives Matter impact.

Wolvercote Community Market

Wolvercote Community Market is a non profit-making, volunteer-run market which encourages the community and visitors to enjoy fresh, affordable, low-impact food from local producers.

TELEPHONE: 07367 877 727

EMAIL: info@cagoxfordshire.org.uk

WEBSITE: www.cagoxfordshire.org.uk



SIGN UP TO 'THE KEY', OUR FORTNIGHTLY
SUSTAINABILITY NEWSLETTER